

J.M.G.

CONSTRUCTION & GENERAL
TRADING CO. LTD.



Company Profile





J.M.G.

CONSTRUCTION & GENERAL
TRADING CO. LTD.



Company Profile

CONTENT

Policy Statement on Health, Safety and Environment.....	1
General Information.....	2
Company Vision & Mission Statement.....	3
Company Information.....	4
Our Management Team	5
Company Resources & Equipment.....	6
Project Reference & Engagements.....	10
Our Clients.....	26
Our Location.....	27





POLICY STATEMENT ON HEALTH, SAFETY AND ENVIRONMENT

J.M.G. Construction and General Trading Co. Ltd. is committed to promote health, safety and environment (HSE) in all aspects of its business activities, and shall take every reasonable and practical measure to eliminate and mitigate the risk of personnel injury, health hazard and damage to properties. J.M.G. strongly believes that its HSE objectives can be achieved through the following measures:

- Implement HSE Management System (HSEMS) that integrates HSE into all management functions and treating it as vital component of all JMG businesses.
- Provide a safe and healthy work environment and establish measures that eliminate and mitigate risks to employees, subcontractors and clients.
- Deploy competent work force and adequate resources in all construction activities.
- Adapt Company HSE policies to internationally accepted standards, national statutory requirements, and industry standards and practices.
- Promote HSE engagements with clients, subcontractors, regulatory bodies, local communities and other stakeholders.
- Strive towards HSE excellence through innovative initiatives and sustained commitment to safeguard and promote health, safety and environment.

JMG management shall be responsible for the review and proper implementation of Company HSE policy to ensure strict compliance with international standards and national regulations.

GENERAL INFORMATION

The Managing Director, **Mr. Johannes Ghebremariam**, is the founder of J.M.G. Construction and General Trading Co. Ltd. He has vast business experience in Construction, Automobile dealership, Transportation and Logistics in East Africa and Europe.

With over 30 years of business experience, he formed J.M.G. Construction and General Trading Co. Ltd in 2011 in South Sudan to engage in construction and general trading activities. Over the years, JMG has carried out several construction projects for the public and private sectors, and became one of the fastest growing construction companies in South Sudan. The Company is currently engaged in major road construction works across South Sudan. JMG has expanded its business operations to Uganda in 2013 and Rwanda in 2015.

The main construction services provided by the Company comprise construction of roads, dams, commercial and residential buildings and public facilities for Government, UN, NGOs and private organizations.

We own and operate a wide range of specialized road construction equipment that enables us to ensure on time delivery of projects. We have the capacity to work at any location in South Sudan. We work closely with clients, subcontractors, partners and communities to complete their projects on time, with quality and within budget.





OUR VISION

Our vision is to be a leading and trusted construction and general trading company in East Africa capable of delivering services of the highest quality.

OUR MISSION

Our mission is to provide cost-effective and high quality construction and trading services that satisfy the needs of our clients.

COMPANY INFORMATION

COMPANY LEGAL NAME:

J.M.G. CONSTRUCTION & GENERAL TRADING CO. LTD.

COMPANY'S CONSTITUTION

COUNTRY	YEAR	TELEPHONE	ADDRESS
SOUTH SUDAN	2011	+211 927 629 965	Thong Ping, Bilpham Road, Juba
UGANDA	2013	+256 788 587 299	7th Street, SMS Building, Industrial Area Namuwongo, Kampala
RWANDA	2015	+250 788 380 099	Masoro Free Zone, Kigali

PRINCIPAL SERVICES:

Road Construction, Dam Construction, Residential and Commercial Building Construction and General Trading.

COMPANY AUTHORIZED REPRESENTATIVE INFORMATION:

Name : Johannes Ghebremariam Kidane

Position : Managing Director

E-mail : info@jmg2011co.com

Website : <http://www.jmg2011co.com>



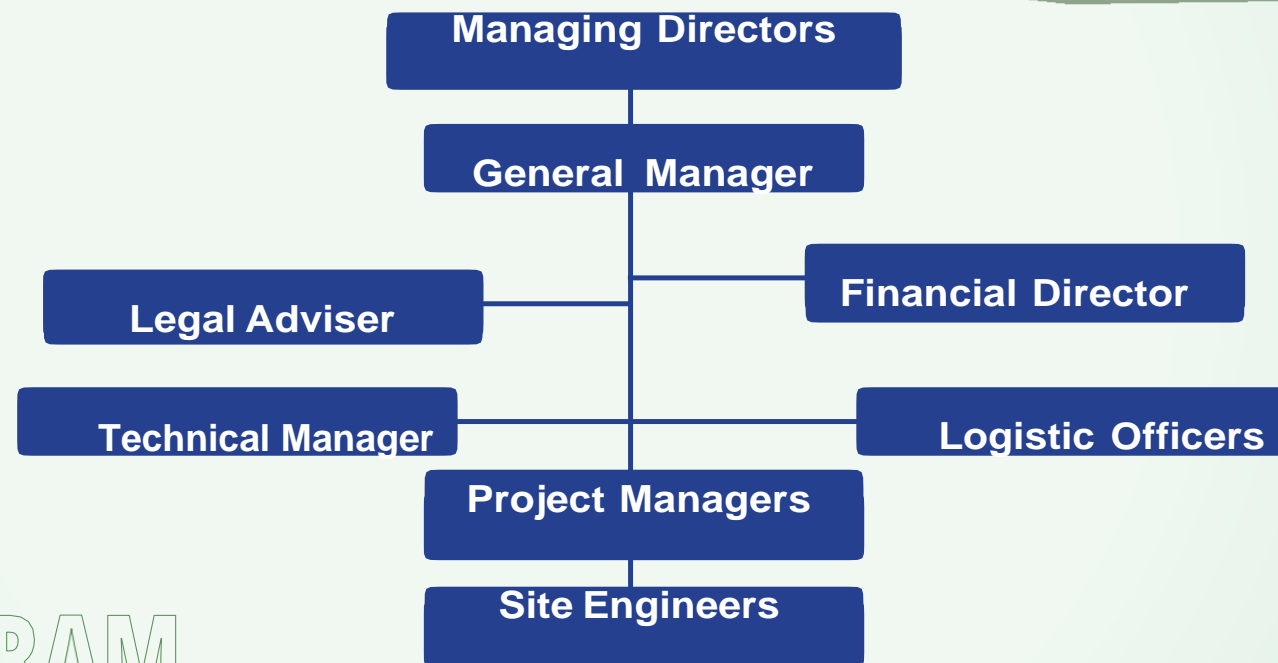
OUR MANAGEMENT TEAM

Our team of well-trained staff is our greatest asset. It comprises of highly qualified managers, civil engineers, surveyors, accountants, etc. drawn from South Sudan, Uganda, Rwanda, Ethiopia and Eritrea.

Our team is operating in a dynamic environment that brings many challenges but also great rewards from engaging in wide ranging construction activities.

Our success is a result of the expertise and professional work of our highly qualified workforce who always strives to deliver customized solutions that meet the needs and requirements of clients.

Our employees take pride in **“Getting the Job done Right”**.



ORGANOGRAM

COMPANY RESOURCES & EQUIPMENT

Staff	Experience (Years)				Level of Education				
	0-5	5-10	10-20	>20	MSc/MA	BSc/BA	Diploma	Certificate	Total
Managing Director				2	1	1			2
General Manager				1	1				1
Finance Manager				1		1			1
Civil Engineers	1	2	1	1	1	3	1		5
Building Engineers		1	1			2			2
Electrical Engineers		1	1			2			2
Surveyors	1	1	1			1	2		3
Technicians/Mechanics	2	4	7	2			10	5	15
Accountants	1	1		2		2	2		4
Store Keepers		3				1	2		3
Purchasers	1	2	1			2	2		4
Administrators		2	2		1	2	1		4
Secretaries	2	1	1				4		4
Nurses	4					2	2		4
Operators		58	10	2				70	70
Drivers		72	15	3				90	90
Guards	5	23						28	28

Our team of construction professionals is organized to offer a single-source solution to clients, be it in the construction of roads, dams and buildings, site preparation, renovation works, and real estate development. We support our clients from inception to the commissioning of fully operational projects. Our management and operational staff work in tandem to ensure that safety standards are strictly observed in providing construction services.

COMPANY RESOURCES & EQUIPMENT

J.M.G. Construction and General Trading Co. Ltd. owns and operates a wide range of construction equipment to service and support its construction activities. It also maintains workshops to service and repair its equipment and trucks.



COMPANY RESOURCES & EQUIPMENT



COMPANY RESOURCES & EQUIPMENT



ENGAGEMENTS 2015



Abeminehn Commissioner Office, South Sudan



Welt Hunger Hilfe Office at kololo, South Sudan



JMG Office, G+2 Under Construction, South Sudan



JMG Office Building, G+2, Juba, South Sudan

ENGAGEMENTS



Kapoeta Road, FAO Project, 2018



Jelhak Renk Road/Upper Nile State, 2015



Jelhak Renk Road/Upper Nile State, 2015



ENGAGEMENTS 2017



JMG Warehouse, Juba, South Sudan

ENGAGEMENTS 2020



Mangala Camp 2 (1km²) 2020

ENGAGEMENTS 2020



JBH Mangala Road Project, from 65-75 km (10 km)

PROJECT REFERENCE & ENGAGEMENT



Luri Urban Road Network, 2021



Luri Urban Road Network, 2021



Luri Road L2 & L3 Project (9.9 km) 2021



PROJECT REFERENCE & ENGAGEMENT



Wau-Kuajok-Gogrial Highway, 2021/2022



Wau-Kuajok-Gogrial Highway, 2021/2022



Wau-Kuajok-Gogrial Highway, 2021/2022



Wau-Kuajok-Gogrial Highway, 2021/2022

PROJECT REFERENCE & ENGAGEMENT



Juba-Bor Highway, 2022



Juba-Bor Highway, 2022



Juba-Bor Highway, 2022



Juba-Bor Highway, 2022

ENGAGEMENTS 2022



Juba-Bor Road



PROJECT REFERENCE & ENGAGEMENT



Tonj-Wau Highway, 2022



Tonj-Wau Highway, 2022

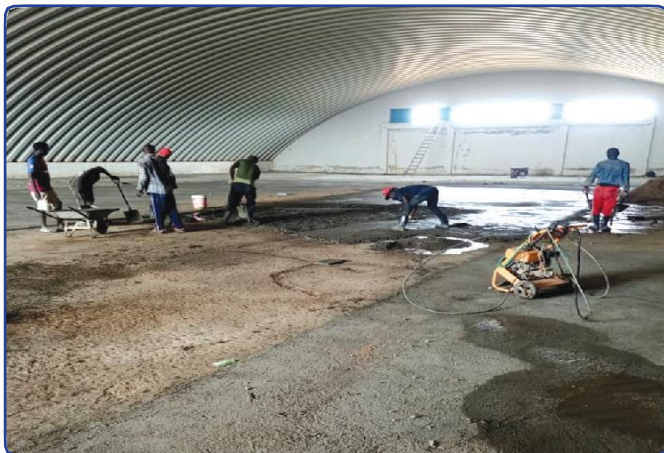


Tonj-Wau Highway, 2022



Tonj-Wau Highway, 2022

ENGAGEMENTS 2022



FAO Warehouse in Juba, South Sudan, 2022



FAO Warehouse in Juba, South Sudan, 2022



**Marial Lou Livestock Training Institute,
FAO, Tonj - 2022**

ENGAGEMENTS 2022



Juba-Rokon-Mundri Highway (95 Kms)

ENGAGEMENTS 2022



Mundri-Mvolo-Rumbek Highway (30 Kms)

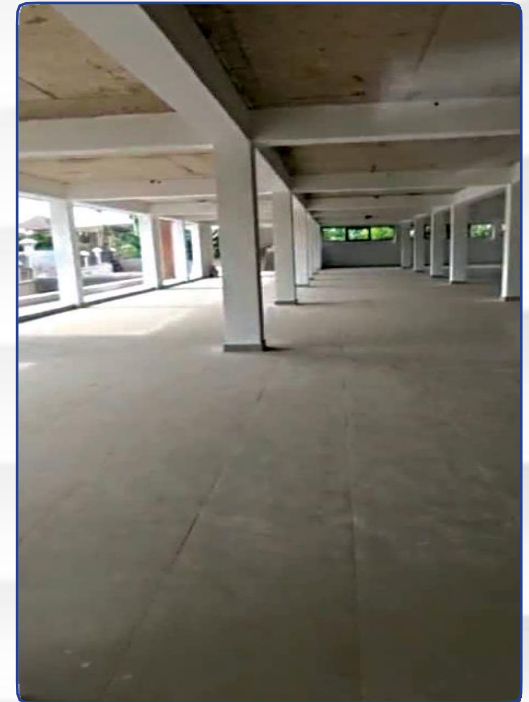
ENGAGEMENTS 2021/22



Gacuriro Building (Rwanda)

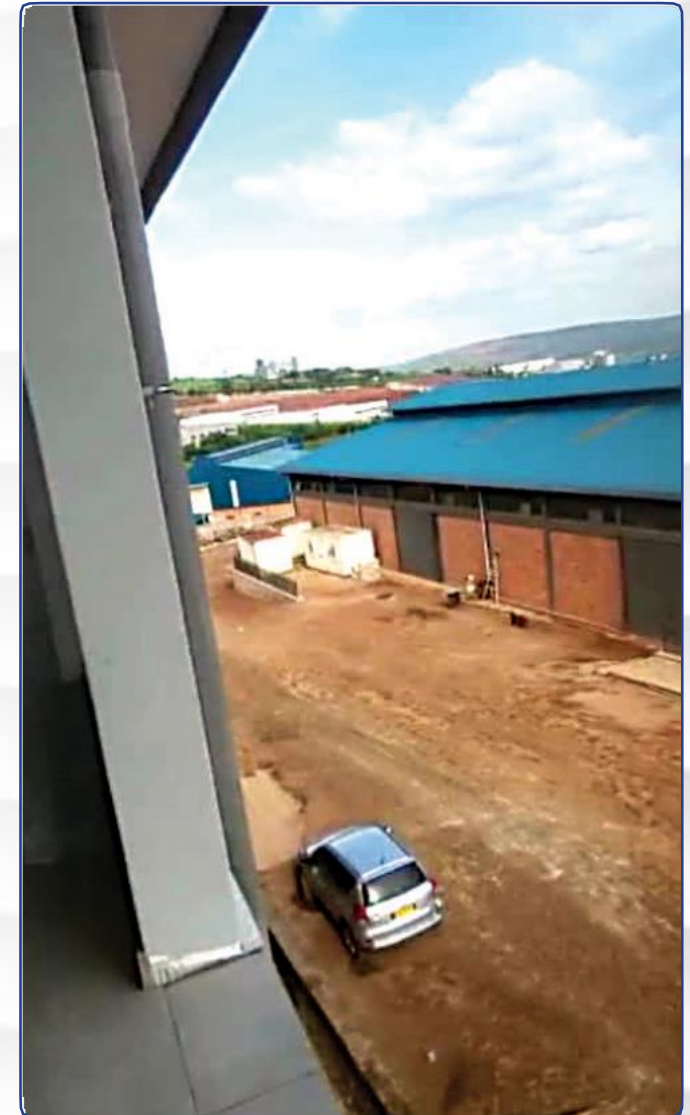
ENGAGEMENTS 2021/22

FUTURE PERSPECTIVE OF JMG FURNITURE FACTORY BUILDING, MASORO, (RWANDA)



ENGAGEMENTS 2021/22

JMG FURNITURE FACTORY, MASORO, (RWANDA)



OUR CLIENTS 2012-2022



J.M.G. Construction & General Trading Co. Ltd continues to grow as a result of its high quality services and expertise of its employees. It has expanded its business activities by providing innovative construction solutions to complex infrastructural projects across South Sudan.

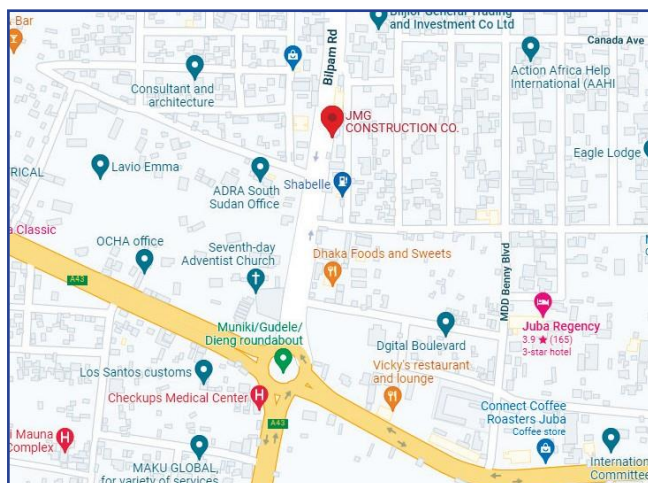
In pursuance of our values for quality, performance and excellence, we deliver our promises and continuously search for new and better ways in providing best Solutions to our clients.

We care about our clients and are committed to provide them the best services.

We also care about our employees and make every effort to ensure their safety and professional development.

In brief we aim to satisfy the needs of our clients, ensure safety of our employees, safeguard interest of local communities and protect the environment in which we live and work

OUR LOCATION



SOUTH SUDAN

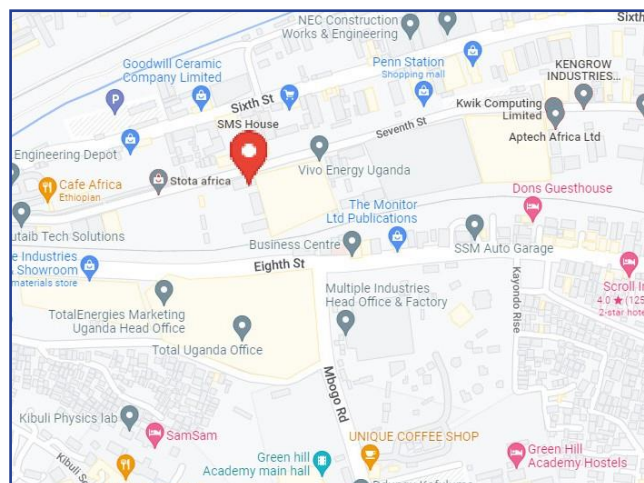
Thongping, Bilpham Road, Juba

Website : <http://www.jmg2011co.com>

Email : info@jmg2011co.com

Tel : +211 927 629 965
+211 916 928 233

Juba, South Sudan



UGANDA

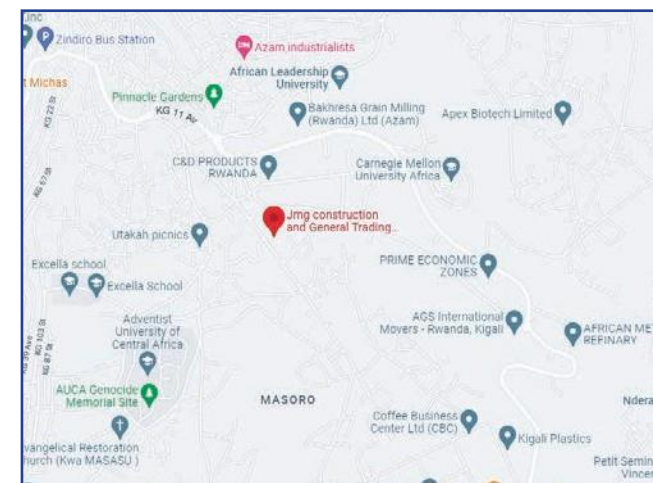
7th Street SMS Building, Industrial Area Namuwango, Kampala.

Website : <http://www.jmg2011co.com>

Email : info@jmg2011co.com

Tel : +256 788 587 299
P.O. Box : 27189

Kampala, Uganda



RWANDA

Masoro Free Zone, Kigali

Website : <http://www.jmg2011co.com>

Email : info@jmg2011co.com

Tel : +250 788 380 099
+250 782 330 874

P.O. Box: 7282

Kigali, Rwanda



SOUTH SUDAN

Thongping, Bilpham Road, Juba

Website : <http://www.jmg2011co.com>

Email : info@jmg2011co.com

Tel : +211 927 629 965
+211 916 928 233

Juba, South Sudan

UGANDA

7th Street SMS Building, Industrial Area
Namuwango, Kampala.

Website : <http://www.jmg2011co.com>

Email : info@jmg2011co.com

Tel : +256 788 587 299

P.O. Box : 27189

Kampala, Uganda

RWANDA

Masoro Free Zone, Kigali

Website : <http://www.jmg2011co.com>

Email : info@jmg2011co.com

Tel : +250 788 380 099
+250 782 330 874

P.O. Box : 7282

Kigali, Rwanda